

Course Gas Flow Metrology

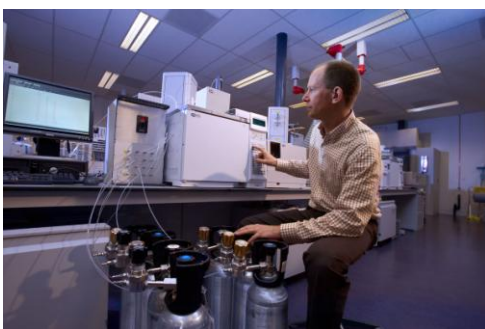


This **five-day course** focuses on the backgrounds of gas flow and energy measurement and the pitfalls that can be encountered in these measurements.

It was developed for people who are active in gas quantity and energy measurements and for people who are responsible for calibration or the initial verification of gas meters, like metering managers and metering engineers, design engineers, station operators, service staff, inspectors and employees responsible for and performing calibration activities.

Contents of the course

- Module 0: Backgrounds of metrology (0,5 day)
 - The structure of metrology
 - Measurement uncertainty
- Module 1: Legal metrology requirements (0,5 day)
 - Structure of legal metrology
 - Legal requirements for gas meters and volume conversion devices
 - Risks of measurement based decisions
- Module 2: Fluid dynamics and instrumentation (1 day)
 - Introduction to fluid dynamics
 - Instrumentation for low-pressure gas flows
 - Instrumentation for high-pressure gas flows
- Module 3: Energy measurement (gas composition) (1 day)
 - Energy measurement
 - Gas chromatography
 - Performance assessment and evaluation
 - Software and algorithms
- Module 4: Gas properties (0,75 day)
 - Thermodynamic properties of natural gas
 - Gas Custody Transfer
- Module 5: Calibration of meters (1,25 day)
 - Euroloop, the new facility for calibration of flow meters
 - LNG measurements and standards
 - Calibration models, uncertainty of calibration
 - Building-up traceability, calibration facilities
 - Hands-on training Calibration of flow meters in VSL laboratories



The participants should have basic knowledge of pc-based spreadsheets like Excel.



VSL B.V.

Thijsseweg 11
2629 JA Delft
P.O.Box 654
2600 AR Delft
The Netherlands

T +31 (0)15 269 15 00
F +31 (0)15 261 29 71
E info@vsl.nl
I www.vsl.nl



**Dutch
Metrology
Institute**



Scope and
Accreditation
www.rva.nl



Calibration &
Measurement
Capabilities
www.bipm.org/kcdb

Duration

5 consecutive days, 9h00-16h30

Language

The course material is in English. The course will also be given in English, unless only Dutch speaking participants will attend.

Lunches, refreshments and course material are included.

Location

The course takes place at:
VSL
Thijsseweg 11
2629 JA DELFT, The Netherlands

Certificate

All participants will receive a certificate of attendance at the end of the course.

Information

For further information please contact

Mrs Marion de Niet:

mdniet@vsl.nl

T +31 15 269 15 68

F +31 15 261 29 71